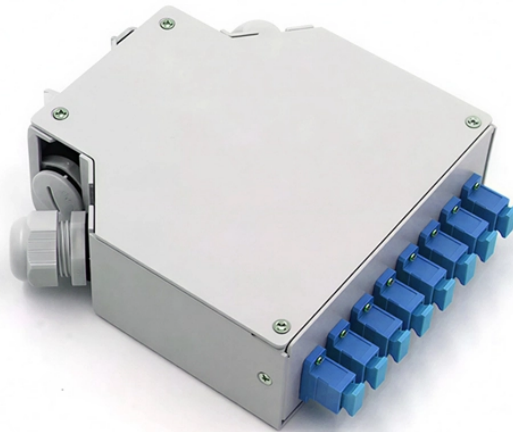


Are optical modules divided into OLTs



Overview

These modules are typically installed in Optical Line Terminals (OLTs) at the service provider's central office and Optical Network Units (ONUs) or Optical Network Terminals (ONTs) at the customer's premises. It converts data signals, manages bandwidth, and connects hundreds of users over a single optical fiber infrastructure. It works by injecting a known light source into the fiber and measuring. While copper continues to dominate horizontal cabling systems where few devices require more than 10 Gbps and many are powered via Power over Ethernet (PoE), the use of fiber cabling systems is on the rise wherever speeds are reaching 40 and 100 Gbps and beyond, or wherever there is a need for.

Are optical modules divided into OLTs



An OLT (optical line terminal), also known as optical line termination, acts as the endpoint hardware device in a passive optical network. The OLT contains a central processing unit (CPU), ...



An Optical Loss Test Set (OLTS) is a device used for testing the performance and integrity of a fiber optic cable. The primary function of an OLTS is to measure the amount of optical ...



In a Fiber Optic Network, a component called Optical Line Terminal (OLT) is a vital component that acts as an interface between the ISP and the subscriber. It is basically the endpoint hardware component ...



Firstly, the power supply methods for OLT equipment can be divided into single power supply and dual power supply. OLTs with a single power supply typically require only one power ...



The Optical Line Terminal (OLT) serves as the critical gateway in GPON networks, seamlessly managing the flow of data from service providers to end-users. In this blog post, you'll ...



In short: The OLT (Optical Line Terminal) is the central control unit of a Passive Optical Network (PON). It converts data signals, manages bandwidth, and connects hundreds of users over ...



Depending on the underlying fiber technology, an OLT can be EPON, GPON, XG-PON or WDM.



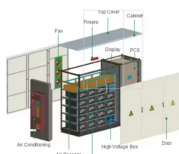
Firstly, the power supply methods for OLT equipment can be divided into single power supply and dual power supply. OLTs with a single power supply ...



OLT Model & Split Ratio: OLTs connect to ONTs via optical splitters, which divide the optical signal. A common split ratio is 1:32, meaning one OLT port can serve 32 ONTs.



A GPON optical module is a transceiver used in GPON networks to convert electrical signals into optical signals and vice versa. These modules are typically installed in Optical Line ...



As fiber deployments become commonplace, network owners and technicians are paying more attention to the two crucial devices for testing fiber optical cables: the Optical Loss Test Set (OLTS) and the ...

Contact Us

For more information, pricing, or custom solutions, please contact us:

Website: <https://www.samastersbaseball.co.za>

Email: sales@samastersbaseball.co.za

Phone: +27 63 874 2095

Address: 15 Innovation Drive, Technopark, Stellenbosch, 7600, South Africa

This document is for informational purposes only. Specifications subject to change without notice.

