

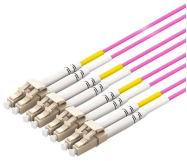
Are fiber optic ST interfaces and FC interfaces compatible



Overview

Compare LC, SC, FC & ST fiber-optic connectors — size, coupling, and ideal use cases — to help you choose the best fit for your network setup. An optical fiber patch Cable is a jumper wire used to connect from equipment to an optical fiber cabling link, and it is usually used for the connection between an optical transceiver and a terminal box. Each connector differs in ferrule size, coupling mechanism, insertion loss behavior, handling convenience, and suitability for specific environments such as FTTH, data centers, industrial. Of the more than a dozen types of fibre-optic connectors available, the four most commonly used today are LC, SC, FC, and ST. In addition to serving the same general function, the four connectors differ in size, locking mechanism, and best applications. The following guide systematically describes. While ST, SC, FC, and LC dominate, several other connectors are used in niche scenarios. Dual-fiber connector, similar latch to RJ-45. Popular in early high-density telecom systems. Miniaturized version of SC, uses 1.

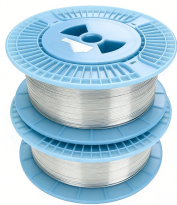
Are fiber optic ST interfaces and FC interfaces compatible



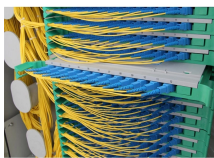
Ultimately, the choice of fiber connector depends on the environment, equipment, and performance requirements. Knowing these differences ensures ...



LC dominates modern deployments, SC remains widely used, while FC and ST persist in specialized and legacy roles. Understanding these differences ensures reliable, high-performance ...



Understanding fiber connector types—SC/APC, SC/PC, LC/UPC, LC/APC, ST/PC, FC/PC, and FC/APC—is essential for selecting the right interface for your application.



Compare optical fiber termination types, including SC, LC, FC, and ST. View our chart and learn how to choose the right connector for your network.



Two common types of fiber connectors are the FC (Ferrule Connector) and the ST (Straight Tip) connector. Understanding their unique characteristics is essential for anyone working with fiber ...



The following guide systematically describes each connector type to help you make an informed selection for the connector that best suits your fibre-optic networking system.



Optical fiber connectors are used to join optical fibers where a connect/disconnect capability is required. Pelco uses ST and FC connection types.



An optical fiber connector, commonly known as an "optical fiber joint", is a physical interface used to connect optical fiber cables. The common types mainly include the following:



Technical comparison of SC, LC, FC and ST fiber connectors including structure, ferrule design, coupling mechanism, and application use cases.



Compare LC, SC, FC, ST, and MTP/MPO fiber connectors. Learn their structures, applications, advantages, and drawbacks to choose the right type for your network.



Ultimately, the choice of fiber connector depends on the environment, equipment, and performance requirements. Knowing these differences ensures reliable and future-proof optical ...

Contact Us

For more information, pricing, or custom solutions, please contact us:

Website: <https://www.samastersbaseball.co.za>

Email: sales@samastersbaseball.co.za

Phone: +27 63 874 2095

Address: 15 Innovation Drive, Technopark, Stellenbosch, 7600, South Africa

This document is for informational purposes only. Specifications subject to change without notice.

