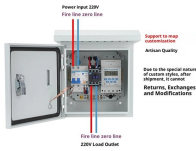


Aggregation Switches and Gigabit Switches



Aggregation Switches and Gigabit Switches

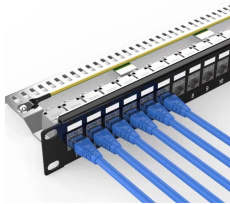
Product Wiring Diagram



Aggregation-layer platforms The most appropriate FortiSwitch unit to form the aggregation layer comprises many 10/25/40 gigabit Ethernet ports to address the access layer and a few 100-GbE ...



Enhance routing, security, and performance with RIP, OSPF, VLAN, ACL, and QoS to ensure greater network stability. Provides advanced Security ACLs for improved security, traffic control, and QoS, ...



The GWN7830 series of aggregation network switches also boasts end-to-end quality of service, flexible security settings, and support for maximum network capacity.



Aggregation switches equipped with all-fiber ports provide solutions for the aggregation layer of networks, while multi-gigabit switches with full 10G ports are designed for the deployment of Wi-Fi 7 ...



Built with a durable metal enclosure and advanced switching architecture, the Aggregation Switch supports multiple Gigabit and 10G SFP uplinks for flexible deployment. Managed models feature ...



The expected growth of Gigabit and multigigabit services requires operators to architect network access scalability upfront. For this reason, we've delivered a data center-influenced standalone OLT ...



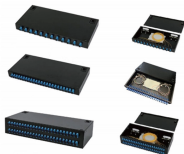
They complement fixed RJ-45-based Cisco Catalyst 3850 Series switches and can run in stacked configurations with them with up to 480 Gbps of stack throughput. They can also operate in ...



Discover the role of aggregation switches. Explore differences between aggregation, access, and core switches, and choose the right model for your network.



Equipped with future-proof fiber-optic and multi-Gigabit Ethernet (mGbE) ports as well as high-throughput uplink and stacking ports, they form the basis for efficient and fail-safe networks.



What is the difference between an aggregate switch and a core switch? An aggregate switch consolidates traffic from access switches, while a core switch forms the backbone of the ...

Contact Us

For more information, pricing, or custom solutions, please contact us:

Website: <https://www.samastersbaseball.co.za>

Email: sales@samastersbaseball.co.za

Phone: +27 63 874 2095

Address: 15 Innovation Drive, Technopark, Stellenbosch, 7600, South Africa

This document is for informational purposes only. Specifications subject to change without notice.

