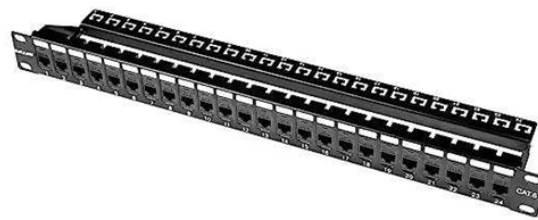


Access Switch Port Aggregation



Overview

Port aggregation allows you to group multiple physical ports into one unit. By bundling multiple network connections into a single high-bandwidth link, aggregation switches help. Switch-to-Switch Aggregation: This is useful in scenarios where you need to interconnect multiple switches to increase the bandwidth available between them and ensure network redundancy. It helps in managing higher traffic loads between switches. It is commonly used to increase bandwidth, improve network performance, and provide redundancy in case of link failure. This article looks at what each such tool does, compares how they differ from each other, and offers suggestions as to what sort of network each.

Access Switch Port Aggregation



In Ethernet port aggregation, multiple physical ports on a switch are grouped together to form a single logical port. This logical port acts as a single ...



Port aggregation can increase maximum throughput, and allow for network redundancy. It does this by splitting traffic across multiple ports instead of forcing clients to use a single uplink port on a switch.



Port aggregation allows you to group multiple physical ports into one unit. Port aggregation is useful for implementing load balancing and provides a redundant link backup. To allow port aggregation, the ...



You can configure LAGs to connect a QFX Series product or an EX4600 switch to other switches, like aggregation switches, servers, or routers. This example describes how to configure LAGs to connect ...



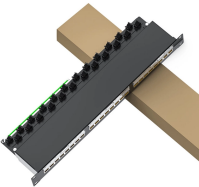
In Ethernet port aggregation, multiple physical ports on a switch are grouped together to form a single logical port. This logical port acts as a single high-bandwidth link, providing increased ...



Link aggregation, also known as port aggregation or NIC teaming, is a technique used in layer 2 and layer 3 network switches to combine multiple physical links into a single logical link.



An aggregate switch is a high-capacity network switch that consolidates connections from multiple access switches, acting as a central point for managing network traffic and providing ...



Discover the crucial differences between core, aggregation, and access switches. Find out which type can best transform your network's performance in 2025.



Switch aggregation refers to the concept of consolidating multiple access layer switches into a single aggregation layer switch in a traditional three-tier network design.



Discover the role of aggregation switches. Explore differences between aggregation, access, and core switches, and choose the right model for your network.



This article outlines the process for configuring link aggregation on Meraki Access Points (APs) with dual Ethernet ports, detailing steps to enable or disable this feature and providing specific ...

Contact Us

For more information, pricing, or custom solutions, please contact us:

Website: <https://www.samastersbaseball.co.za>

Email: sales@samastersbaseball.co.za

Phone: +27 63 874 2095

Address: 15 Innovation Drive, Technopark, Stellenbosch, 7600, South Africa

This document is for informational purposes only. Specifications subject to change without notice.

