

Access Switch DS3E0109



Access Switch DS3E0109



View and Download HIKVISION DS-3E0109P-E user manual online. DS-3E0109P-E switch pdf manual download. Also for: Ds-3e0105p-e, Ds-3e0109p-m.



PoE port with 6 KV surge protection. Supports PoE output power management. 100M network access. Wire-speed forwarding and non-blocking design. Store-and-forward switching. Solid high-strength ...



Have you got an user manual for the Hikvision DS-3E0109P-E M 9-Port Fast Ethernet PoE Unmanaged Switch in electronic form? Please send it to us and help us expand our library of instruction manuals.



DS-3E0109P-E/M(B) 8 Port Fa. thernet Unmanaged PoE Switch Intelligent PoE Management. When the power supply exceeds the limit, PoE ports intelligently. manage the power supply, which extends t. ...



View and Download HIKVISION DS-3E0109P-E user manual online. DS-3E0109P-E switch pdf manual download. Also for: Ds-3e0105p-e, Ds-3e0109p-m.



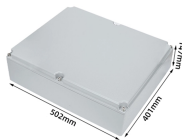
Type: Network Switch Key Features: - 8 × 10/100 Mbps PoE port,1 × 10/100 Mbps RJ45 port. - Up to 300 m Long Range PoE Transmission - 4/8-Core Adaptive Power Supply with Less Power Loss. 8-core ...



When the power supply exceeds the limit, PoE ports intelligently manage the power supply, which extends the switch lifetime. Up to 300 m Long Range PoE Transmission.



The Hikvision DS-3E0109P-E is a network switch that offers reliable and efficient connectivity for a variety of networking environments. Designed for small to medium-sized businesses, this switch is ...



Specification Description Model DS-2CD1323G0E-I Lens 2.8mm fixed lens Sensor 1/2.8" Progressive Scan CMOS Max. Resolution 1920 × 1080 (2 MP) IR.



The Hikvision DS-3E0109P-E is a network switch that offers reliable and efficient ...



DS-3E0109P-E/M(B) 100M PoE Switch (B) is a layer 2 100M PoE switch. Based on wire-speed forwarding, the switch supports Ethernet PoE power supply and extend mode. The power supply ...



DS-3E0109P-E(C) 8 Port Fast Ethernet Unmanaged PoE Switch 8 × 10/100 Mbps PoE port, 1 × 10/100 Mbps RJ45 port.

Contact Us

For more information, pricing, or custom solutions, please contact us:

Website: <https://www.samastersbaseball.co.za>

Email: sales@samastersbaseball.co.za

Phone: +27 63 874 2095

Address: 15 Innovation Drive, Technopark, Stellenbosch, 7600, South Africa

This document is for informational purposes only. Specifications subject to change without notice.

