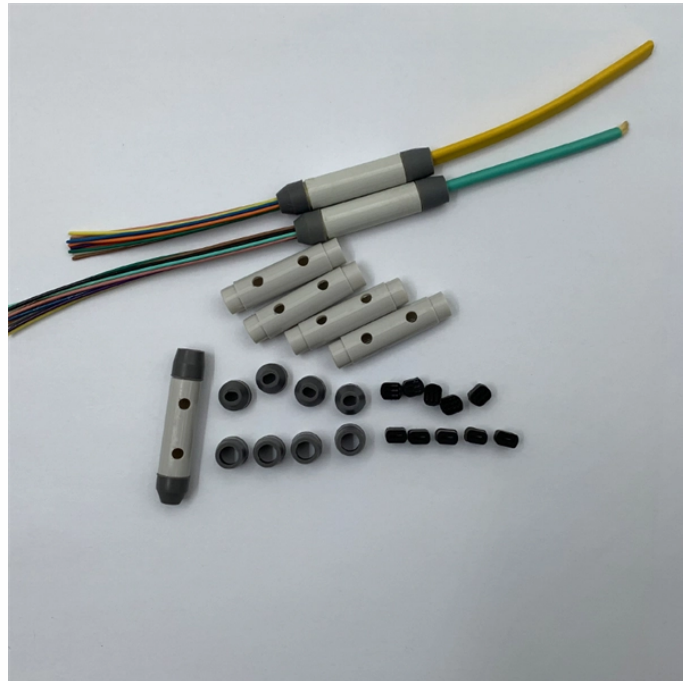


AQ-1210E Optical Temporal Reflectometer Selected for Centralized Procurement



Overview

It features a 1310/1550/1625nm wavelength configuration, enabling comprehensive fiber characterization, fault location, and link verification. Its user-friendly interface and robust design make it ideal for technicians deploying and maintaining optical infrastructure. Yokogawa, as a 100+ year instrumentation manufacturer, delivers OTDRs (Optical Time Domain Reflectometer) based on our measurement technologies developed since the early days of optical fiber communication and 40+ years of experience in optical test & measurement solutions for real world lab and. Manuals and User Guides for YOKOGAWA AQ1210E. We have 3 YOKOGAWA AQ1210E manuals available for free PDF download: User Manual, Getting Started Manual Yokogawa AQ1210E Pdf User Manuals. 75 m, Attenuation Dead Zone 4 m, Optical Wavelength 1310 to 1625 nm, Dynamic Range 35 to 37 dB. Engineered with innovative.

AQ-1210E Optical Temporal Reflectometer Selected for Centralized



Engineered with innovative technology, the AQ1210 features dual operation mode by multi-touch touchscreen and hard-key buttons as well as fully automatic measurement and easy-to-read analysis ...



The AQ2200-312 is a variable optical attenuation for the AQ2200 series. When it is installed in an AQ2200 series frame controller, it allows optical output to be attenuated to any value.



The Yokogawa AQ1210 series OTDR tester is designed to empower field technicians to make fast and precise measurements with confidence. The AQ1210 optical time domain reflectometer delivers high ...



The Yokogawa AQ1210E OTDR is engineered for precision and ease of use in optical fiber testing. Operating at 1310nm, 1550nm, and 1625nm wavelengths, it accurately identifies fiber breaks, splices, ...



View online or download Yokogawa AQ1210E User Manual.



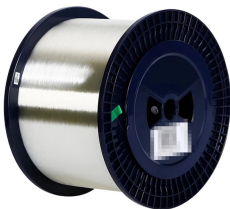
This is useful for detecting/identifying the position of a fiber end point, break, or bend of an installed optical fiber network. Viewing the changes in the trace as an operator change the measurement ...



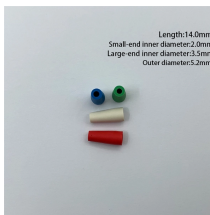
Measurement functions required for optical fiber installation replacement and maintenance can be installed on the otdr they are available for single tasking and multi tasking10



The Yokogawa AQ1210 Optical Time Domain Reflectometer (OTDR) is a high-performance, compact, and lightweight device designed for fiber optic testing and ...



Two selections of optical power sensors are available, which are optical power meter and optical power checker*, offering two levels of accuracy and functionality to best suit the user's needs/budget.



The Yokogawa AQ1210 Optical Time Domain Reflectometer (OTDR) is a high-performance, compact, and lightweight device designed for fiber optic testing and troubleshooting.



AQ1210E - Optical Time Domain Reflectometer (OTDR) from Yokogawa Test & Measurement Corporation. Get product specifications, Download the Datasheet, Request a Quote and get pricing ...

Contact Us

For more information, pricing, or custom solutions, please contact us:

Website: <https://www.samastersbaseball.co.za>

Email: sales@samastersbaseball.co.za

Phone: +27 63 874 2095

Address: 15 Innovation Drive, Technopark, Stellenbosch, 7600, South Africa

This document is for informational purposes only. Specifications subject to change without notice.

