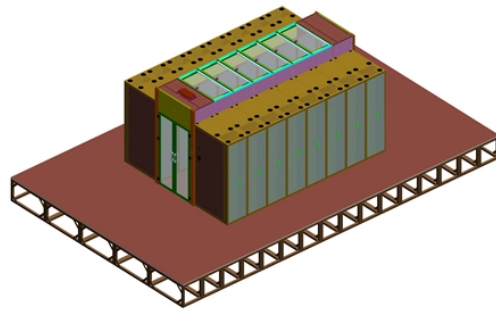


## 96-core terminal box dimensions



## 96-core terminal box dimensions



The ODF rack mount 2U fiber optic enclosure 96 Core Full set is designed to ...



Metal 96 Core Fiber Optic Termination Box is currently being widely used for distributing outdoor optical cable in indoor and outdoor conditions.



High Quality Fiber Access Terminal box - 96 Cores 490\*400\*150mm Description 96 core fiber access termination box is able to hold up to 96 subscribers. It is used as a termination point for the feed...



The ODF rack mount 2U fiber optic enclosure 96 Core Full set is designed to provide a distribution point to feed a high capacity of fiber optic cables to other closets or zones.



The UltraSlim 1RU Panels provide secure transitions between MPO and LC or SC discrete connector interfaces. They are used to interface MPO backbones with LC or SC patching and active equipment ...



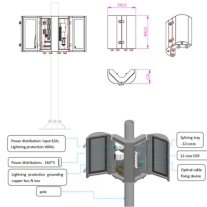
The Fiber optic Terminal Box is used to distribute and protect the optical fiber links in FTTH Network. It is available for the distribution and terminal connection of ...



ODF unit box can be individually equipped with fiber optic distribution frame, but also with the digital wiring unit, audio wiring unit installed in a cabinet / rack.



Fiber access termination closure can hold up to 16 subscribers and 96 splicing points as closure. It is used as a splicing closure and a termination point for the feeder ...



The equipment is used as a termination point for the feeder cable to connect with drop cable in FTTH communication network system. The fiber splicing, splitting, distribution can be done in this box, and ...



Fiber access termination closure can hold up to 16 subscribers and 96 splicing points as closure. It is used as a splicing closure and a termination point for the feeder cable to connect with drop cable in ...



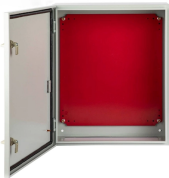
The equipment is used as a termination point for the feeder cable to connect with drop cable in FTTH communication network system. The fiber splicing, splitting, distribution can be done in this box, and ...



Specification Material: Cold-Rolled Steel or Stainless Steel Color Options: Black or White Dimensions: 455 x 405 x 160 mm Fiber Capacity: Up to 96 Fibers Applications: Suitable for FTTH, FTTB, and ...



Grandway's Fiber Termination Box provides a high density wall mounted solution for next generation networks, which aims to provide and manage maximum numbers of fiber termination in a limited space.



Size [mm] 380\*245\*170 Specification [core] 96 QTY [piece] 4 Carton size [cm] 52\*42\*37 volume [m<sup>3</sup>] 0.0808



Cavo Technology FIBER TERMINAL BOX (FTB - 60/ 72/ 84/ 96 PORT) FEATURES: Main body made by ABS, inner structure made PC Anti-UV and water proof design for both indoor and outdoor uses ...

## Contact Us

For more information, pricing, or custom solutions, please contact us:

Website: <https://www.samastersbaseball.co.za>

Email: [sales@samastersbaseball.co.za](mailto:sales@samastersbaseball.co.za)

Phone: +27 63 874 2095

Address: 15 Innovation Drive, Technopark, Stellenbosch, 7600, South Africa

This document is for informational purposes only. Specifications subject to change without notice.

