

SMB AI-Systems & High-Speed Interconnect

400 to 600 cable tray



400 to 600 cable tray



Lake Cable manufactures reliable, highly engineered solutions to your applications" exact specifications and requirements, including Industrial, Utility, Custom OEM and Broadcast quality cable proudly ...



Got a 400 Bad Request error? Discover what causes this HTTP error and follow our proven methods to fix it quickly on any browser.



The 400 Bad Request error is an HTTP status code that means the request you sent to the website server, often something simple like a request to load a web page, was somehow ...



After sending an HTTP request to an IIS server, an HTTP client (such as Internet Explorer) may display the following type of error message in the browser...



The reason for a 400 response is typically due to malformed request syntax, invalid request message framing, or deceptive request routing. Clients that receive a 400 response should expect ...



VNTC tray cable combines Class B stranded bare copper conductors with dual-layer PVC/nylon insulation and aluminum/polymer tape shielding, engineered for versatile industrial applications.



OmniCable offers an industry-leading inventory of tray cables for power and control applications. Our selection includes 600V tray cable for industrial use, designed to meet stringent standards for ...



N-400, Application for Naturalization Naturalization is the process of becoming a U.S. citizen if you were born outside of the United States. Use this form to apply for naturalization if you ...



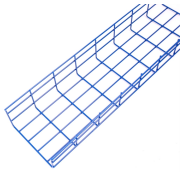
Our 600 volts tray cable and wire offer ultimate flexibility for easier and faster installations.



The support strength of our FRP cable trays is equal to or even higher than that of metal cable trays, while retaining the non-conductive, non-magnetic and corrosion-resistant properties of FRP, which ...



If it has excellent electrical continuity and is integrated in the installation's equipotential bonding system, a metal cable tray reduces the coupling's impact and thus contributes to good EMC of the electrical ...



A 400 Bad Request error occurs when a request sent to the website server is incorrect or corrupted, and the server receiving the request cannot understand it. While the issue is often on the ...



Discover the causes of the 400 Bad Request Error and explore practical solutions to resolve it. Read the article for a clear guide to troubleshooting.



The 400 Bad Request error indicates that the server cannot or process the request due to a client error. Read about the common causes and fixes.



From motor power runs and VFD connections on manufacturing floors to instrumentation wiring in refineries and process control cable in water treatment facilities, our TC-ER rated tray cable is ...



Southwire Armorlite® Type MC Feeder cable is suitable for use as follows: - Feeder and service power distribution in commercial, industrial, institutional, and multi-residential buildings.



This cable is easier to pull than a standard tray cable and features black numbered conductors with printed color code for easy identification. It is also UV-resistant, may be used in direct burial ...



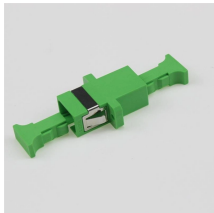
Explore standard sizes by tray type, understand width and depth limits, and see how to calculate and choose compliant cable tray sizes for real projects.



A 400 Bad Request error is an HTTP status code that indicates the server could not understand the request due to invalid syntax. Common causes include URL string errors, corrupted ...



When you see 400 bad request error, it usually means that your browser is sending too much data to the server, either through cookies or through headers. To fix this issue, you can take ...



Explore standard sizes by tray type, understand width and depth limits, and see how to calculate and choose compliant cable tray sizes for real projects.

Contact Us

For more information, pricing, or custom solutions, please contact us:

Website: <https://www.samastersbaseball.co.za>

Email: sales@samastersbaseball.co.za

Phone: +27 63 874 2095

Address: 15 Innovation Drive, Technopark, Stellenbosch, 7600, South Africa

This document is for informational purposes only. Specifications subject to change without notice.

