

380 Cable Tray Quotation



Overview

For an MP Husky Cable Tray System estimate, please provide the information requested on this page and submit it. For the best experience on our site, be sure to turn on Javascript in your browser. com to answer any questions you may have on subject matter, and/or call: 1-800-851-7415 > 2 > and ask for technical support. Eaton is a registered trademark. Cable tray installation cost per meter varies by specifications; GangLong Fiberglass offers kits for raised floor system and facility needs. Cable trays are vital in electrical installations, providing secure pathways for power, communication, and control cables across residential, commercial, and. Load and Support: Cable trays must carry 75 kg of cable weight per metre. They also need to support a concentrated load of 70 kg (like a worker) and have supports every 3 metres.

380 Cable Tray Quotation



Discover the key factors affecting cable tray price per meter, including materials, demand, and competition. Get cost insights and future pricing trends.



Learn how to get quick and accurate cable tray pricing for your projects. This guide covers new builds, renovations, and custom systems.



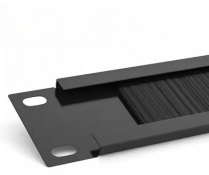
For an MP Husky Cable Tray System estimate, please provide the information requested on this page and submit it. We will contact you if more information is necessary. A completed Cable Tray estimate ...



Follow us on social media to get the latest product and support information.



We offer complete kits to provide you with cable tray ready to install under new or existing raised floors based on the unique requirements at your facility.



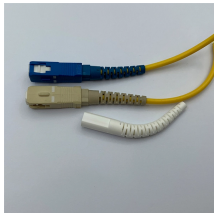
3b. How often is the tray supported? Both the “pounds per foot” and “how often the tray is supported” must be completed if the NEMA Class is unknown. 4. Siderail Height: The side rail height is defined ...



Explore competitive cable tray pricing options featuring durable materials, easy installation, and scalable solutions for efficient cable management in commercial and industrial applications.



S: DELIVERY REQUIREMENTS: All tray widths and lengths listed are not available for every tray type. See Co. -339-7814 atkore.com/cope 2021© Atkore, Inc. All rights reserved.



The cost of steel cable trays generally falls between \$5 and \$25 per meter, depending on several factors such as the tray's gauge, finish, and the specific features of the tray.



Cable tray quotation guide - Free download as PDF File (.pdf), Text File (.txt) or read online for free.

Contact Us

For more information, pricing, or custom solutions, please contact us:

Website: <https://www.samastersbaseball.co.za>

Email: sales@samastersbaseball.co.za

Phone: +27 63 874 2095

Address: 15 Innovation Drive, Technopark, Stellenbosch, 7600, South Africa

This document is for informational purposes only. Specifications subject to change without notice.

